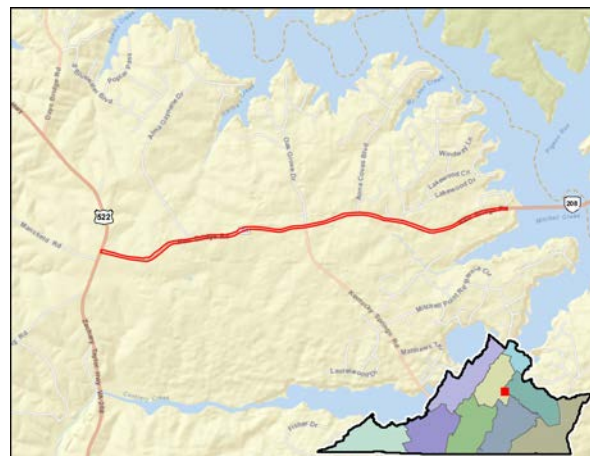


For more information on how to read a scorecard, click [here](#).

Project Location.....	Louisa County
SMART SCALE Area Type.....	C
Submitting Entity.....	Louisa County
Preliminary Engineering.....	Underway
Right of Way.....	Not Started
Construction.....	Not Started
Expenditures to Date.....	\$826,244
Key Fund Sources.....	Safety
Administered By.....	VDOT
Eligible Funding Program(s).....	District Grant
VTrans Need.....	Safety: PSI Data and Geometric Issue
	(Click for details)



Factor	Congestion Mitigation		Safety		Accessibility			Economic Development			Environment		Land Use
Measure	Increase in Peak Period Person Throughput	Reduction in Peak Period Delay	Reduction in Fatal and Injury Crashes	Reduction in Fatal and Injury Crash Rate	Increase in Access to Jobs	Increase in Access to Jobs for Disadvantaged Populations	Increase in Access to Multimodal Travel Choices	Square Feet of Commercial/Industrial Development Supported	Tons of Goods Impacted	Improvement to Travel Time Reliability	Potential to Improve Air Quality	Other Factor Values Scaled by Potential Acreage Impacted	Support of Transportation-Efficient Land Development
Measure Value	0 thousand persons	0 thousand person hrs.	12.6 EPDO	214.1 EPDO / 100M VMT	9.9 jobs per resident	10.2 jobs per resident	0 adjusted users	7,261,916.7 thousand adj sq. ft.	4,800.5 thousand adj daily tons	3,078,313.2 adj. buffer time index	0 adjusted points	4.3 tscaled points	adjusted jobs & pop.
Normalized Measure Value (0-100)	0	0	3.8	1.1	0.4	0.4	0	25.8	0.3	0.1	0	8.3	
Measure Weight (% of Factor)	50%	50%	50%	50%	60%	20%	20%	60%	20%	20%	50%	50%	N/A
Factor Value	0		2.5		0.3			15.5			4.1		0
Factor Weight (% of Project Score)	15%		25%		25%			25%			10%		N/A
Weighted Factor Value	0		0.6		0.1			3.9			0.4		
Project Benefit	5.0												
SMART SCALE Cost	\$14,100,000												
SMART SCALE Score (Project Benefit / SMART SCALE Cost)	3.5												