

PROJECT SCORECARD

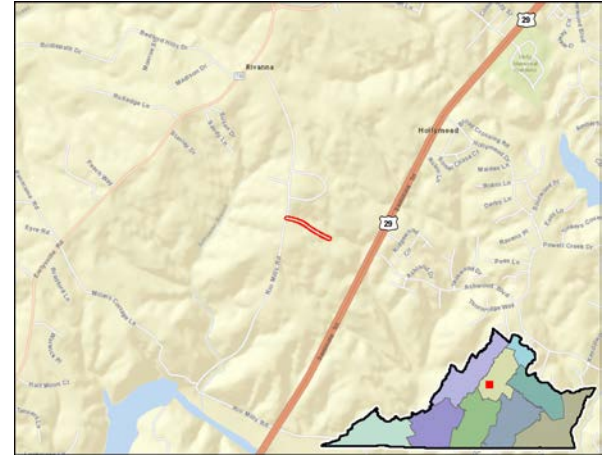
For more information on how to read a scorecard, click here.

Rio Mills Rd/Berkmar Dr Extended Connection

App Id: 1408

Project would construct a 1/4 mile, 2-lane roadway connecting the existing Rio Mills Road to Berkmar Drive Extended (under construction) to address the use of a deficient unpaved road by trucks and other local through traffic on Earlysville Road.

Project Location..... Albemarle County
 SMART SCALE Area Type..... B
 Submitting Entity..... Albemarle County
 Preliminary Engineering..... Not Started
 Right of Way..... Not Started
 Construction..... Not Started
 Expenditures to Date..... N/A
 Key Fund Sources..... N/A
 Administered By..... VDOT
 Eligible Funding Program(s)..... Both
 VTrans Need..... Charlottesville/Albemarle Regional Network
 (Click for details)



<h1>7.0</h1> <p>SMART SCALE SCORE</p>	<h2>#108</h2> <p>OF 404 STATEWIDE</p>
	<h2>#7</h2> <p>OF 35 DISTRICTWIDE</p>

SMART SCALE Requested Funds..... **\$1,315,810**
 Total Project Cost..... **\$3,800,000**
 Project Benefit..... **0.9**
 Project Benefit / Total Cost..... **2.4**

Factor	Congestion Mitigation		Safety		Accessibility			Economic Development			Environment		Land Use
	Increase in Peak Period Person Throughput	Reduction in Peak Period Delay	Reduction in Fatal and Injury Crashes	Reduction in Fatal and Injury Crash Rate	Increase in Access to Jobs	Increase in Access to Jobs for Disadvantaged Populations	Increase in Access to Multimodal Travel Choices	Square Feet of Commercial/Industrial Development Supported	Tons of Goods Impacted	Improvement to Travel Time Reliability	Potential to Improve Air Quality	Other Factor Values Scaled by Potential Acreage Impacted	Support of Transportation-Efficient Land Development
Measure Value	7.2 <small>thousand persons</small>	2.0 <small>thousand person hrs.</small>	2.3 <small>EPDO</small>	6.9 <small>EPDO / 100M VMT</small>	0 <small>jobs per resident</small>	0 <small>jobs per resident</small>	3.5 <small>adjusted users</small>	1,276,096.9 <small>thousand adj sq. ft.</small>	0 <small>thousand adj daily tons</small>	96,022,067.5 <small>adj. buffer time index</small>	4.7 <small>adjusted points</small>	0.8 <small>tscaled points</small>	1,321.0 <small>adjusted jobs & pop.</small>
Normalized Measure Value (0-100)	0.1	0.1	0.7	0	0	0	0	4.5	0	2.3	0	1.5	1.2
Measure Weight (% of Factor)	50%	50%	50%	50%	60%	20%	20%	60%	20%	20%	50%	50%	100%
Factor Value	0.1		0.4		0			3.2			0.8		1.2
Factor Weight (% of Project Score)	15%		20%		25%			20%			10%		10%
Weighted Factor Value	0		0.1		0			0.6			0.1		0.1
Project Benefit	0.9												
SMART SCALE Cost	\$1,315,810												
SMART SCALE Score (Project Benefit / SMART SCALE Cost)	7.0												